

# Inclined Platform Lift

AR-100 & AC-105



## Description : Inclined residential and commercial wheelchair lift

**Applicable standard**  
CSA/B613-00 & B355-09

### Device category

- Indoor use
- Inclined open shaft
- For one person in a wheelchair

### Vehicule type

- Floor dimensions : 760 mm x 1120 mm (30 in x 44 in)
- Others floor dimensions availables
- 90°, 18° and 270° entry/exit possibilities

### Technical specifications

- Maximum capacity : one person in a wheelchair
- Maximum load : 227 kg (500 lbs)
- Drive type : Steel cable on winding drum or chain and sprocket
- Motor : DC, 24 volts
- Nominal speed : 0,08 m/s (16 ft/min) ou 0,1 m/s (19 ft/min)
- Brakes : parachute type
- Floor and side protector arms can be manually retracted as standard feature.
- A motorized retraction system is available as an option

**Controller** : CSA Certification LR45147

### Special features

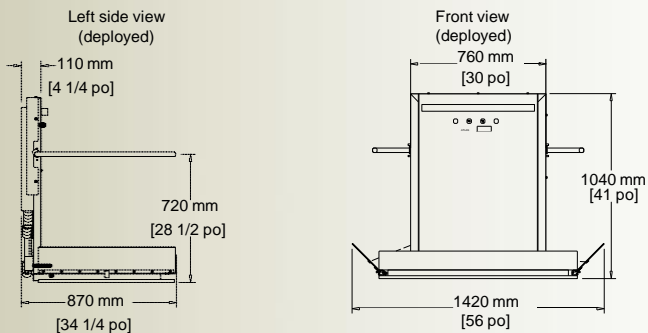
Controller and panel : industrial grade components from Télémécanique

Ramp is varnished natural wood, color matched to existing staircase

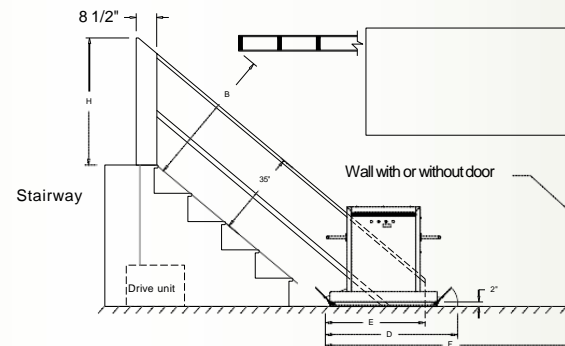
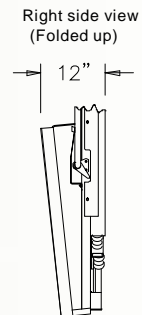
Anti-skid floor surface

### FAST INSTALLATION

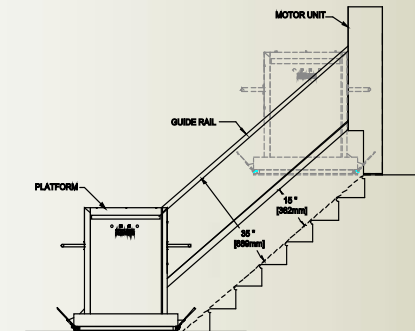
**No mechanical room with chain and sprocket option**



270 mm



DRUM & CABLE



CHAIN & SPROCKET



**Les Escalateurs Atlas inc.**  
Saint-Hyacinthe J2R 1E8  
Phone : 1888 773-6708  
Fax : 450 796-5110  
Email : info@atlasacces.com  
www.atlasacces.com

Notes :