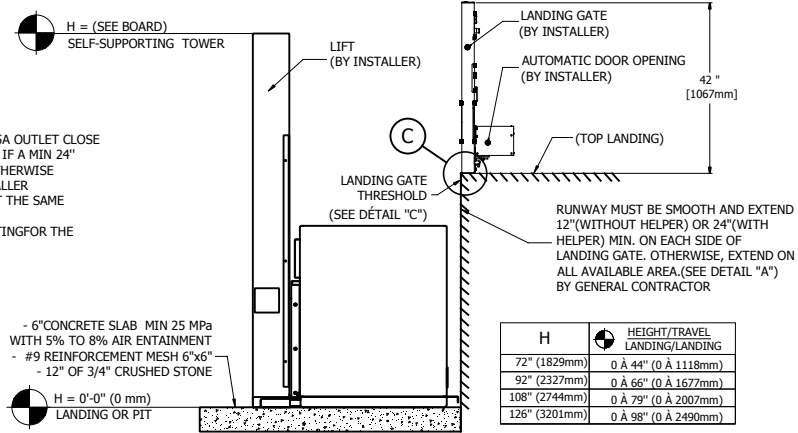


1. PROVIDE ONE GFI 120VAC 15A OUTLET CLOSE TO THE BACK OF TOWER ONLY IF A MIN 24" ACCESS WAY IS AVAILABLE, OTHERWISE COORDINATE WITH LIFT INSTALLER
2. PROVIDE ALSO ONE WIRE AT THE SAME PLACE 120VAC, 15A
3. ENSURE AN ADEQUATE LIGHTING FOR THE VEHICLE AND THE LANDING BY ELECTRICIEN

NOTE: DIRECTION OF DOOR OPENING MAY BE CHANGED (SEE DETAIL "A").

RUNWAY MUST BE SMOOTH AND EXTEND 24" MIN. ON EACH SIDE OF LANDING GATE. OTHERWISE, EXTEND ON ALL AVAILABLE AREA. (SEE DETAIL "A"). BY GENERAL CONTRACTOR

1 VISTA-613-AB 36x60 (WITH HELPER)

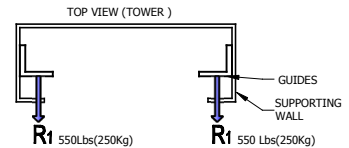


- 6" CONCRETE SLAB MIN 25 MPa WITH 5% TO 8% AIR ENTRAINMENT
 - #9 REINFORCEMENT MESH 6"x6"
 - 12" OF 3/4" CRUSHED STONE
- H = 0'-0" (0 mm) LANDING OR PIT

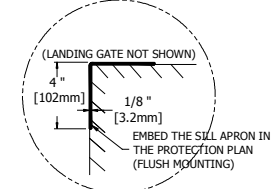
| H | HEIGHT/TRAVEL LANDING/LANDING |
|---------------|-------------------------------|
| 72" (1829mm) | 0 À 44" (0 À 1118mm) |
| 92" (2327mm) | 0 À 66" (0 À 1677mm) |
| 108" (2744mm) | 0 À 79" (0 À 2007mm) |
| 126" (3201mm) | 0 À 98" (0 À 2490mm) |

3 DETAIL A FLOOR ELEVATION

NOTE:
 1. PROVIDE 100 lx MIN. LIGHTING TO THE WHOLE PLATFORM (BY ELECTRICIAN).
 2. ANY WALL LOCATED LESS THAN 12" (WITHOUT HELPER) OR 24" (WITH HELPER) AWAY FROM THE CAB MUST EXCEED THE UPPER LANDING HEIGHT BY AT LEAST 42". IT MUST BE SMOOTH (NO RECESSES OR PROTRUSIONS).

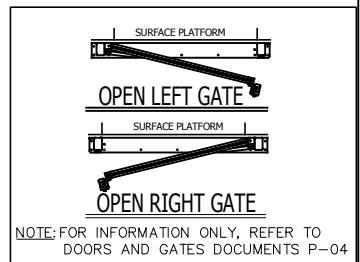


5 RAIL REACTIONS

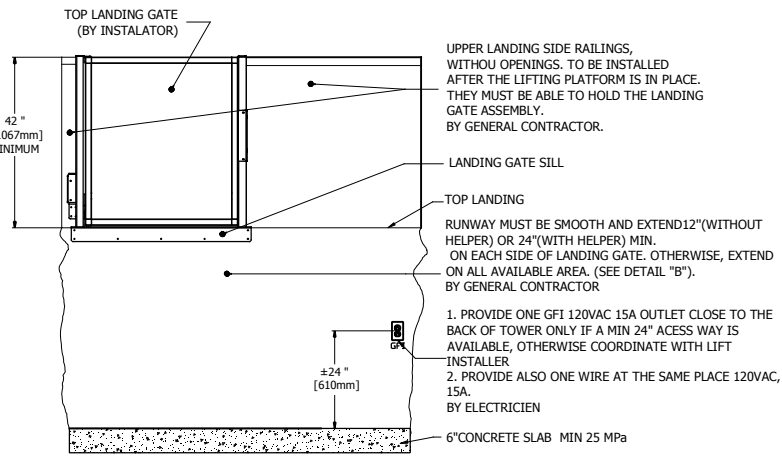


4 DETAIL C

| VISTA_613 TECHNICAL DATA | |
|--------------------------|---|
| TYPE | Outdoor use, vertical lift, open shaft |
| CODE | CSA/B613 |
| MAX CAPACITY | One person a wheelchair or One person a wheelchair and one helper |
| MAX LOAD | 750 Lb (340 Kg) |
| RAIL LINEAR WEIGHT | 5 Lb/ft |
| TRACTION MACHINE | Acme screw and nut |
| ALIMENTATION | DC, 24 VOLT |
| VELOCITY | 9 pi/min (0.05m/s) *option max speed: 14pi/min (0.07m/s) |
| MAX TRAVEL | 98po (2500 mm) max. |
| EMERGENCY BRAKES | Bronze safety nut |
| FINI DE LA CABINE | See document C-01 |
| CABINE | Max floor dimensions 40x66po (1018mm x1679mm) |
| FINI DU PLANCHER | Anti-skid floor surface |
| CONTROL BUTTONS | Weatherproof control buttons |
| CONTOLER | BECVISZ3 (CSA/LR45147) |
| DOOR INTERLOCK | HONEYWELL (RELIALIGN) or GAL (TYPE N) |



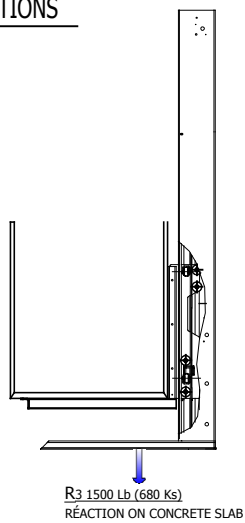
NOTE
 -THIS ELECTRONIC DOCUMENT IS NOT SIGNED OR SEALED BY AN ENGINEER AND MAY NOT BE USED FOR CONSTRUCTION PURPOSES.
 -THIS ELECTRONIC DOCUMENT IS STRICTLY FOR INFORMATION PURPOSES (OR COORDINATION, AS APPLICABLE).
 -NO GUARANTEES ARE GIVEN ON THE INTEGRITY OF THE TRANSMITTED INFORMATION.
 -NO GUARANTEES ARE GIVEN ABOUT PAST OR FUTURE CHANGES TO THIS DOCUMENT



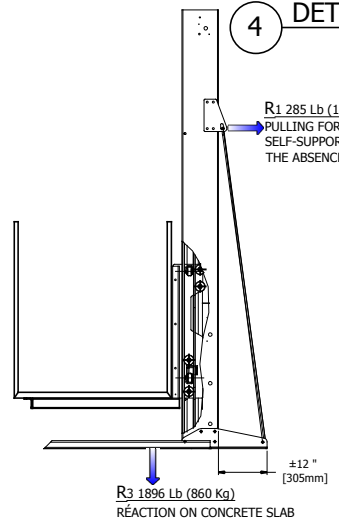
1. PROVIDE ONE GFI 120VAC 15A OUTLET CLOSE TO THE BACK OF TOWER ONLY IF A MIN 24" ACCESS WAY IS AVAILABLE, OTHERWISE COORDINATE WITH LIFT INSTALLER
2. PROVIDE ALSO ONE WIRE AT THE SAME PLACE 120VAC, 15A. BY ELECTRICIEN

NOTE: LIFT NOT SHOWN, IN ORDER TO CLARIFY THE DRAWING.

2 DETAIL B SIDE VIEW



5 VISTA 750 Lb REACTIONS



6 VISTA 1000 Lb REACTIONS

Les Escalateurs Atlas Inc.
 8255 Boul. Laframboise
 St-Hyacinthe (Québec)
 J2R 1E8, Canada
 Tél: (450) 796-5708
 Fax: (450) 796-5110

atlas

TITLE: **GÉNÉRALES INFORMATIONS**

| | | |
|-----------------------|-------------------------|---------------|
| No. DRAWING: VISTA_AB | DATE: 28/01/2016 | REVISION: |
| CODE: B355 | DRAFTER: M. Debusschere | No SHEET: 1/1 |