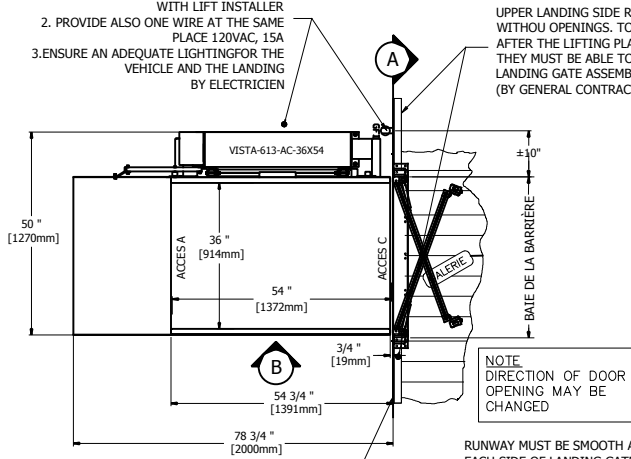


1. PROVIDE ONE GFI 120VAC 15A OUTLET CLOSE TO THE BACK OF TOWER ONLY IF A MIN 24" ACCESS WAY IS AVAILABLE, OTHERWISE COORDINATE WITH LIFT INSTALLER
2. PROVIDE ALSO ONE WIRE AT THE SAME PLACE 120VAC, 15A
3. ENSURE AN ADEQUATE LIGHTING FOR THE VEHICLE AND THE LANDING BY ELECTRICIEN



**1 VISTA-613-AC 36x54 (WITHOUT HELPER)**

**NOTE**

1. PROVIDE 100 lx MIN. LIGHTING TO THE WHOLE PLATFORM (BY ELECTRICIAN).
2. ANY WALL LOCATED LESS THAN 12" (WITHOUT HELPER) OR 24" (WITH HELPER) AWAY FROM THE CAB MUST EXCEED THE UPPER LANDING HEIGHT BY AT LEAST 42". IT MUST BE SMOOTH (NO RECESSES OR PROTRUSIONS).

UPPER LANDING SIDE RAILINGS, WITHOUT OPENINGS, TO BE INSTALLED AFTER THE LIFTING PLATFORM IS IN PLACE. THEY MUST BE ABLE TO HOLD THE LANDING GATE ASSEMBLY. (BY GENERAL CONTRACTOR)

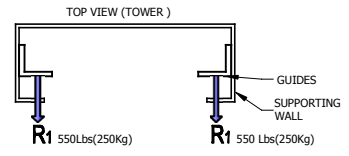
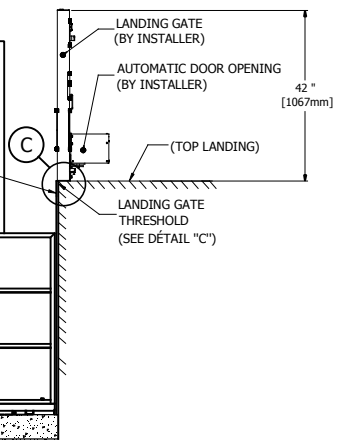
H = (SEE BOARD)  
SELF-SUPPORTING TOWER

RUNWAY MUST BE SMOOTH AND EXTEND 12" (WITHOUT HELPER) OR 24" (WITH HELPER) MIN. ON EACH SIDE OF LANDING GATE. OTHERWISE, EXTEND ON ALL AVAILABLE AREA. (SEE DETAIL "A") (BY GENERAL CONTRACTOR)

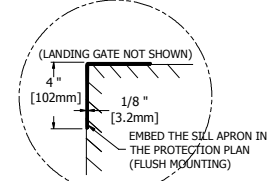
H = 0'-0" (0 mm)  
LANDING OR PIT

- 6" CONCRETE SLAB MIN 25 MPa WITH 5% TO 8% AIR ENTRAINMENT  
- #9 REINFORCEMENT MESH 6"x6"  
- 12" OF 3/4" CRUSHED STONE

**3 DETAIL B FLOOR ELEVATION**

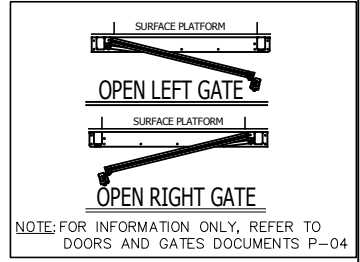


**5 RAIL REACTIONS**



**4 DETAIL C**

| VISTA_613 TECHNICAL DATA |   |
|--------------------------|---|
| TYPE                     | Outdoor use, vertical lift, open shaft                            |
| CODE                     | CSA/B613  |
| MAX CAPACITY             | One person a wheelchair or One person a wheelchair and one helper |
| MAX LOAD                 | 750 Lb(340 Kg)  |
| RAIL LINEAR WEIGHT       | 5 Lb/ft   |
| TRACTION MACHINE         | Acme screw and nut  |
| ALIMENTATION             | DC, 24 VOLT   |
| VELOCITY                 | 9 pi/min(0.05m/s)<br>*option max speed: 14pi/min(0.07m/s)         |
| MAX TRAVEL               | 98po (2500 mm) max.   |
| EMERGENCY BRAKES         | Bronze safety nut   |
| FINI DE LA CABINE        | See document C-01   |
| CABINE                   | Max floor dimensions 40x66po (1018mm x1679mm)                     |
| FINI DU PLANCHER         | Anti-skid floor surface   |
| CONTROL BUTTONS          | Weatherproof control buttons                                      |
| CONTOLER                 | BECVISZ3 (CSA/LR45147)  |
| DOOR INTERLOCK           | HONEYWELL (RELIALIGN) or GAL (TYPE N)                             |



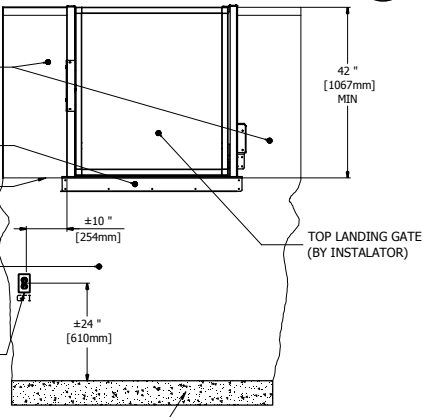
**NOTE**

- THIS ELECTRONIC DOCUMENT IS NOT SIGNED OR SEALED BY AN ENGINEER AND MAY NOT BE USED FOR CONSTRUCTION PURPOSES.
- THIS ELECTRONIC DOCUMENT IS STRICTLY FOR INFORMATION PURPOSES (OR COORDINATION, AS APPLICABLE).
- NO GUARANTEES ARE GIVEN ON THE INTEGRITY OF THE TRANSMITTED INFORMATION.
- NO GUARANTEES ARE GIVEN ABOUT PAST OR FUTURE CHANGES TO THIS DOCUMENT

UPPER LANDING SIDE RAILINGS, WITHOUT OPENINGS, TO BE INSTALLED AFTER THE LIFTING PLATFORM IS IN PLACE. THEY MUST BE ABLE TO HOLD THE LANDING GATE ASSEMBLY. BY GENERAL CONTRACTOR.

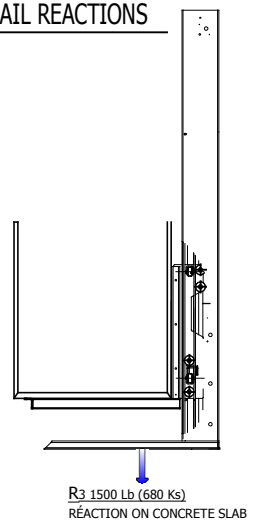
RUNWAY MUST BE SMOOTH AND EXTEND 12" (WITHOUT HELPER) OR 24" (WITH HELPER) MIN. ON EACH SIDE OF LANDING GATE. OTHERWISE, EXTEND ON ALL AVAILABLE AREA. (SEE DETAIL "B"). BY GENERAL CONTRACTOR

1. PROVIDE ONE GFI 120VAC 15A OUTLET CLOSE TO THE BACK OF TOWER ONLY IF A MIN 24" ACCESS WAY IS AVAILABLE, OTHERWISE COORDINATE WITH LIFT INSTALLER
2. PROVIDE ALSO ONE WIRE AT THE SAME PLACE 120VAC, 15A. (BY ELECTRICIEN)

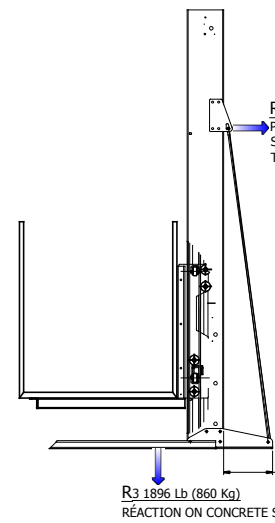


**2 DETAIL A SIDE VIEW**

**NOTE**  
LIFT NOT SHOWN, IN ORDER TO CLARIFY THE DRAWING.



**5 VISTA 750 Lb REACTIONS**



**6 VISTA 1000 Lb REACTIONS**

**Les Escalateurs Atlas Inc.**

8255 Boul. Laframboise  
St-Hyacinthe (Québec)  
J2R 1E8, Canada  
Tél: (450) 796-5708  
Fax: (450) 796-5110

**atlas**

TITLE: **GÉNÉRALES INFORMATIONS**

|             |               |           |
|-------------|---------------|-----------|
| No. DRAWING | DATE:         | REVISION  |
| VISTA_AC    | 28/01/2016    |           |
| CODE:       | DRAFTER:      | No SHEET: |
| B355        | M.Debusschere | 1/1       |